



RS 200 Single Post Ceiling Mounted Basketball Backstop:

SUPPLY & INSTALL:

RS 200 Single Mast Backstops (forward, reverse, or side folding), as supplied by Royal Stewart Ltd.

To be mounted to ceiling structure as per architectural drawings or building conditions.

The main mast shall be made using 5" x 5" (127mm) square tubing.

Top "T" shall be made using 5" (127mm) C-channel.

Top "T" and main mast shall be attached to superstructure by two (2) only adjustable 1" threaded rods.

Front and side braces shall be made using 2" x 2" (50mm) square tubing.

3 ½" (89 mm) O.D. superstructure will be custom designed and furnished.

Dead end of ¼" (6 mm) aircraft cable shall be fastened to a lubricated rolling sleeve, allowing the cable to pull in any direction. Hoisting system shall use 4" (100 mm) ball bearing pulleys.

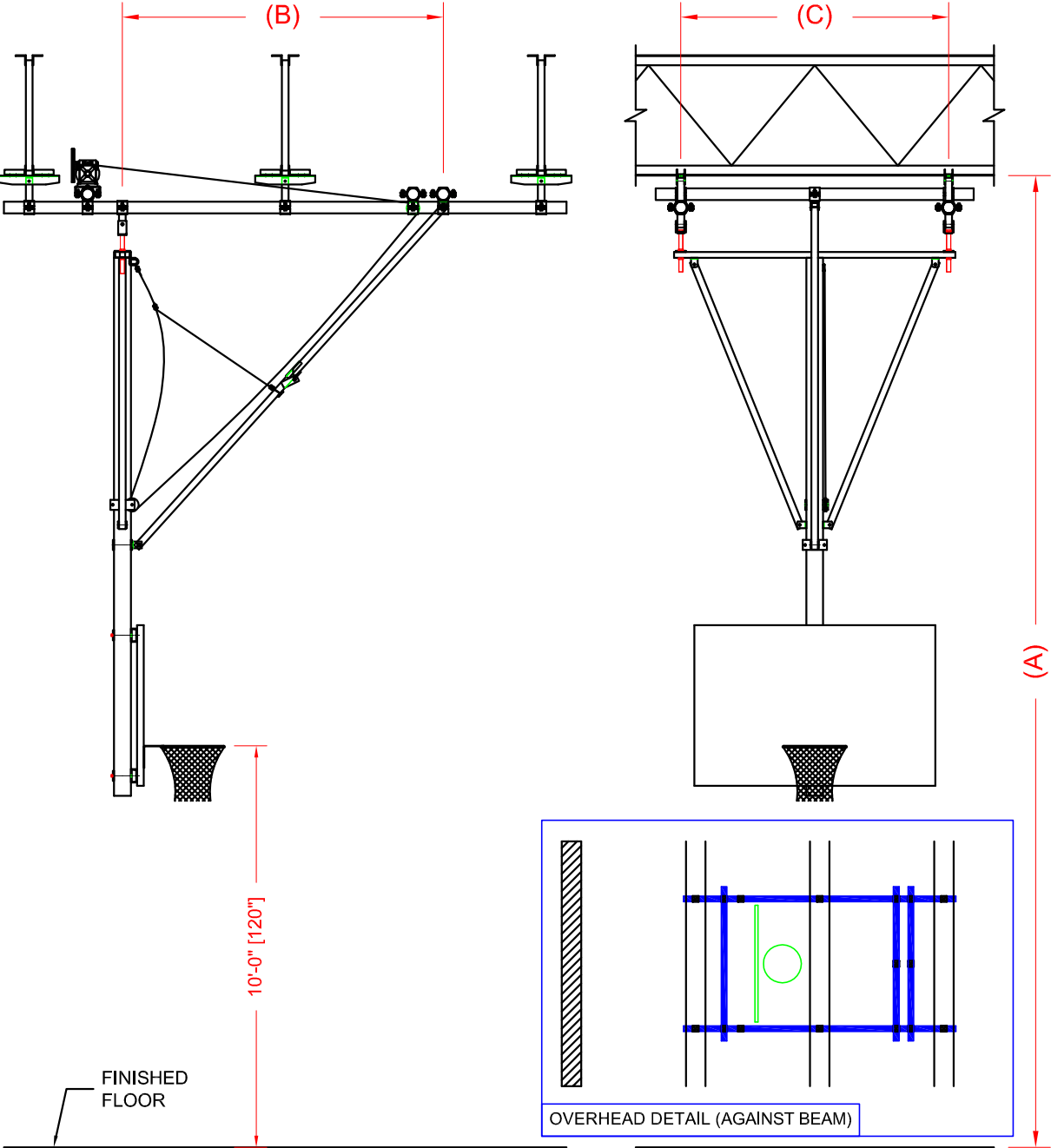
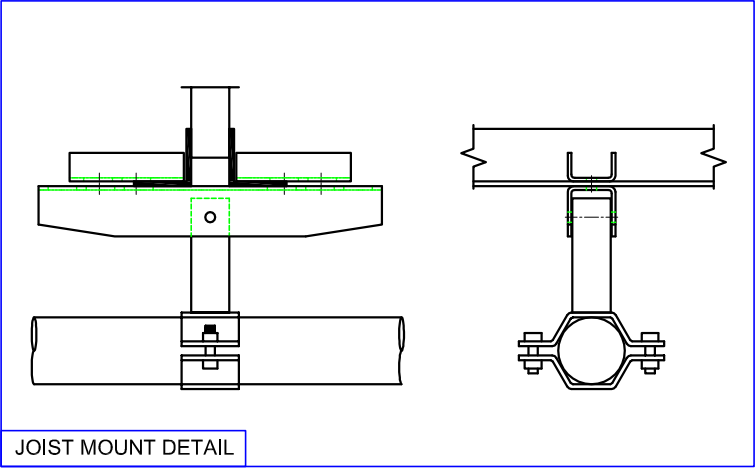
Steel frame shall be painted satin black or primed at factory and painted on site by painting sub contractor.

Backstop shall be electrically operated by means of the RS 340 ¾ HP electric winch with grooved drum and key-operated switch that shall be supplied by equipment supplier.

All wiring and final hook up shall be the responsibility of the electrical contractor.

All accessories to be supplied as specified.

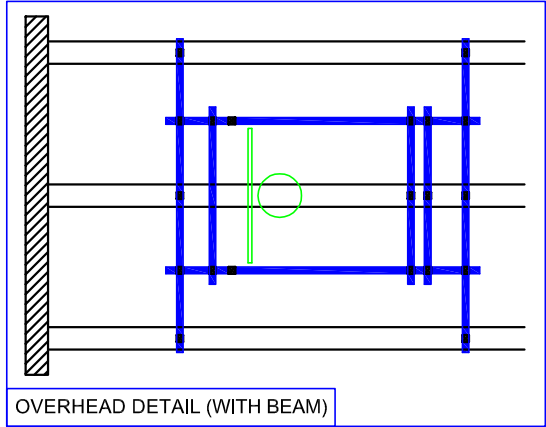
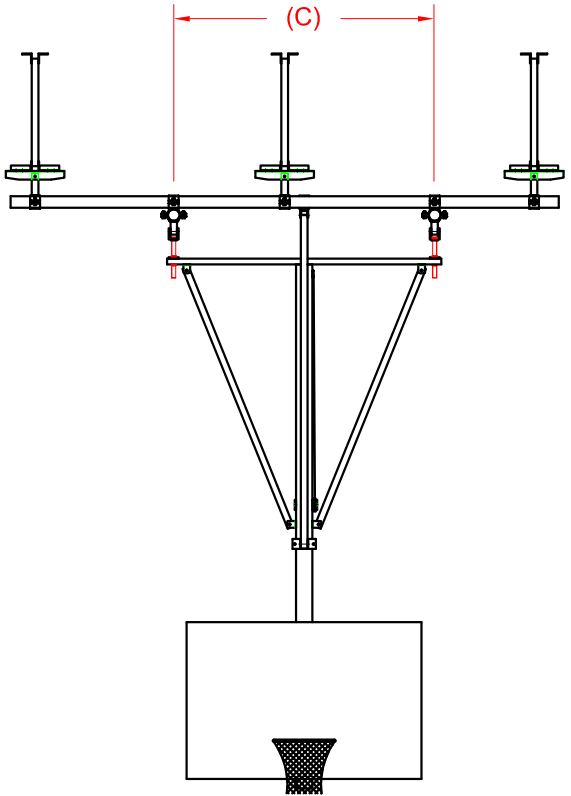
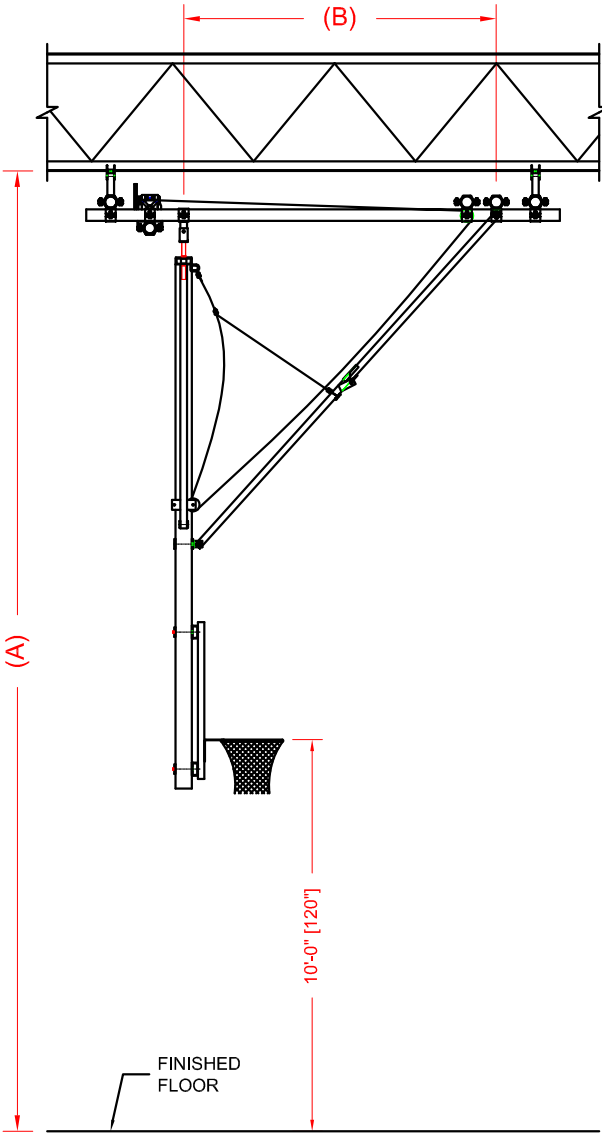
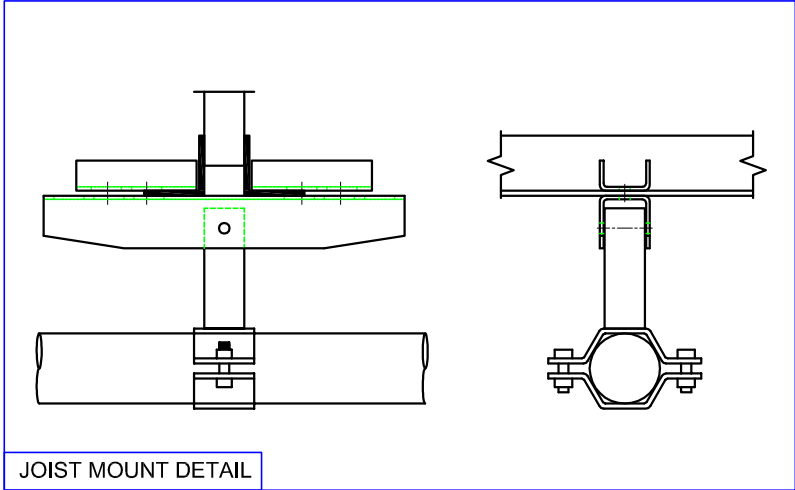
- MODEL -	- A -	- B -	- C -
RS-200-FB-180	18'-0" (216")	3'-9 1/2" (45 1/2")	3'-8" (44")
RS-200-FB-186	18'-6" (222")	4'-3 1/2" (51 1/2")	
RS-200-FB-190	19'-0" (228")	4'-9 1/2" (57 1/2")	
RS-200-FB-196	19'-6" (234")	5'-3 1/2" (63 1/2")	
RS-200-FB-200	20'-0" (240")	5'-9 1/2" (69 1/2")	4'-8" (56")
RS-200-FB-206	20'-6" (246")	6'-3 1/2" (75 1/2")	
RS-200-FB-210	21'-0" (252")	6'-9 1/2" (81 1/2")	
RS-200-FB-216	21'-6" (258")	7'-3 1/2" (87 1/2")	
RS-200-FB-220	22'-0" (264")	7'-9 1/2" (93 1/2")	5'-8" (68")
RS-200-FB-226	22'-6" (270")	8'-3 1/2" (99 1/2")	
RS-200-FB-230	23'-0" (276")	8'-9 1/2" (105 1/2")	
RS-200-FB-236	23'-6" (282")	9'-3 1/2" (111 1/2")	
RS-200-FB-240	24'-0" (288")	9'-9 1/2" (117 1/2")	6'-8" (80")
RS-200-FB-246	24'-6" (294")	10'-3 1/2" (123 1/2")	
RS-200-FB-250	25'-0" (300")	10'-9 1/2" (129 1/2")	
RS-200-FB-256	25'-6" (306")	11'-3 1/2" (135 1/2")	
RS-200-FB-260	26'-0" (312")	11'-9 1/2" (141 1/2")	
RS-200-FB-266	26'-6" (318")	12'-3 1/2" (147 1/2")	
RS-200-FB-270	27'-0" (324")	12'-9 1/2" (153 1/2")	
RS-200-FB-276	27'-6" (330")	13'-3 1/2" (159 1/2")	
RS-200-FB-280	28'-0" (336")	13'-9 1/2" (165 1/2")	



A	05/05/15	DRAWING RELEASE	SC	
REV	DATE	REVISIONS DESCRIPTION	BY	CHK'D
DO NOT SCALE DWG, UOS DIMENSIONS ARE IMPERIAL INCHES				

WORK ORDER / TRACKING NO		QTY REQUIRED		<div>ROYAL STEWART LTD.</div> <div>Your Sports Facility and Auditorium Specialists</div> <div>240 I-XL Cres. (St. Clements Ind. Park)</div> <div>Lockport, Manitoba, Canada, R1A 3R9</div>		1	
MATERIAL						1	
TITLE		RS-200-FB-XXX SINGLE MAST BACKSTOP (DIRECTION : AGAINST BEAM)		SCALE	N.T.S.	DWG SHEET NO	ROUTING
				DRAWN BY	ET	1	
				DATE	04/23/04	DWG NO	REV
							A

- MODEL -	- A -	- B -	- C -
RS-200-FB-180	18'-0" (216")	3'-5 1/2" (41 1/2")	3'-8" (44")
RS-200-FB-186	18'-6" (222")	3'-11 1/2" (47 1/2")	
RS-200-FB-190	19'-0" (228")	4'-5 1/2" (53 1/2")	4'-8" (56")
RS-200-FB-196	19'-6" (234")	4'-11 1/2" (59 1/2")	
RS-200-FB-200	20'-0" (240")	5'-5 1/2" (65 1/2")	
RS-200-FB-206	20'-6" (246")	5'-11 1/2" (71 1/2")	
RS-200-FB-210	21'-0" (252")	6'-5 1/2" (77 1/2")	
RS-200-FB-216	21'-6" (258")	6'-11 1/2" (83 1/2")	
RS-200-FB-220	22'-0" (264")	7'-5 1/2" (89 1/2")	5'-8" (68")
RS-200-FB-226	22'-6" (270")	7'-11 1/2" (95 1/2")	
RS-200-FB-230	23'-0" (276")	8'-5 1/2" (101 1/2")	
RS-200-FB-236	23'-6" (282")	8'-11 1/2" (107 1/2")	
RS-200-FB-240	24'-0" (288")	9'-5 1/2" (113 1/2")	
RS-200-FB-246	24'-6" (294")	9'-11 1/2" (119 1/2")	
RS-200-FB-250	25'-0" (300")	10'-5 1/2" (125 1/2")	6'-8" (80")
RS-200-FB-256	25'-6" (306")	10'-11 1/2" (131 1/2")	
RS-200-FB-260	26'-0" (312")	11'-5 1/2" (137 1/2")	
RS-200-FB-266	26'-6" (318")	11'-11 1/2" (143 1/2")	
RS-200-FB-270	27'-0" (324")	12'-5 1/2" (149 1/2")	
RS-200-FB-276	27'-6" (330")	12'-11 1/2" (155 1/2")	
RS-200-FB-280	28'-0" (336")	13'-5 1/2" (161 1/2")	



A	05/05/15	DRAWING RELEASE	SC	
REV	DATE	REVISIONS DESCRIPTION	BY	CHK'D
DO NOT SCALE DWG, UOS DIMENSIONS ARE IMPERIAL INCHES				

WORK ORDER / TRACKING NO

QTY REQUIRED

MATERIAL

TITLE
RS-200-FB-XXX
SINGLE MAST BACKSTOP
(DIRECTION : WITH BEAM)

ROYAL STEWART LTD.

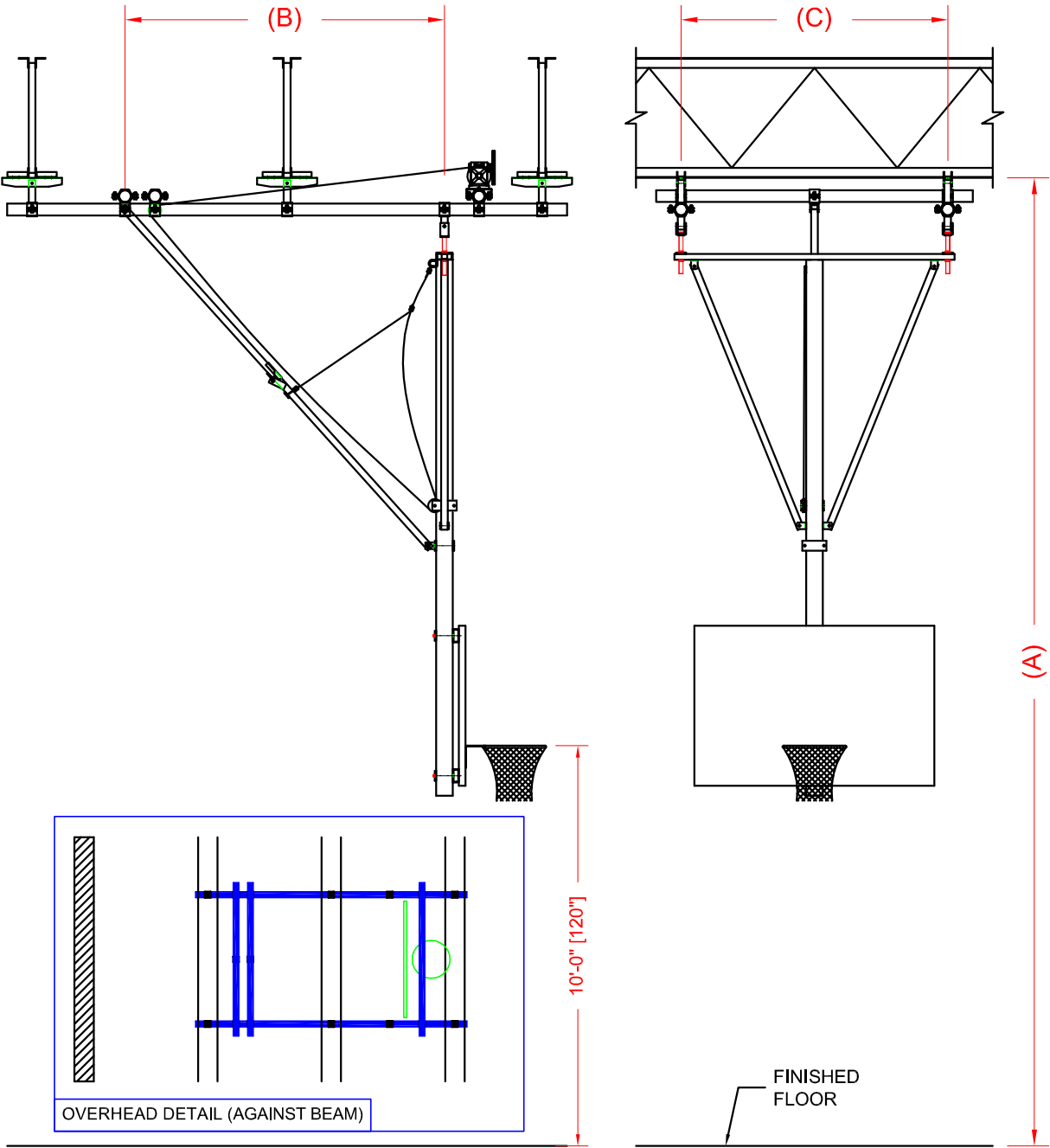
Your Sports Facility and Auditorium Specialists
240 I-XL Cres. (St. Clements Ind. Park)
Lockport, Manitoba, Canada, R1A 3R9

SCALE N.T.S.
DRAWN BY ET
DATE 04/23/04

DWG SHEET NO
1
DWG NO

1
1
ROUTING
REV
A

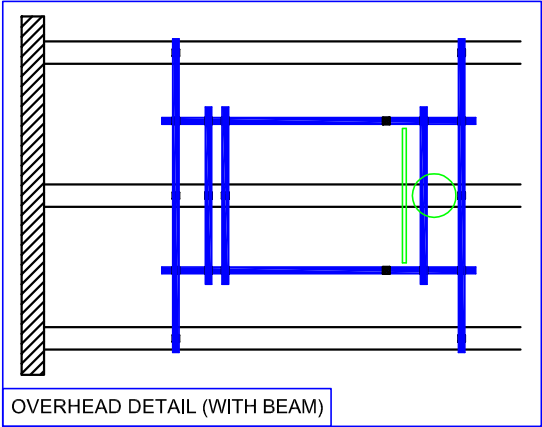
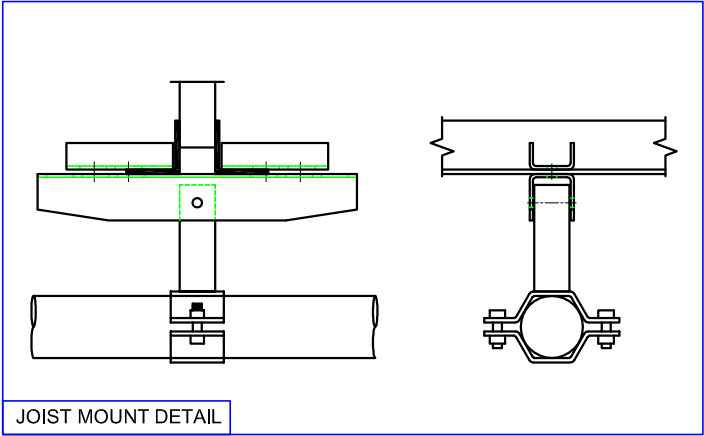
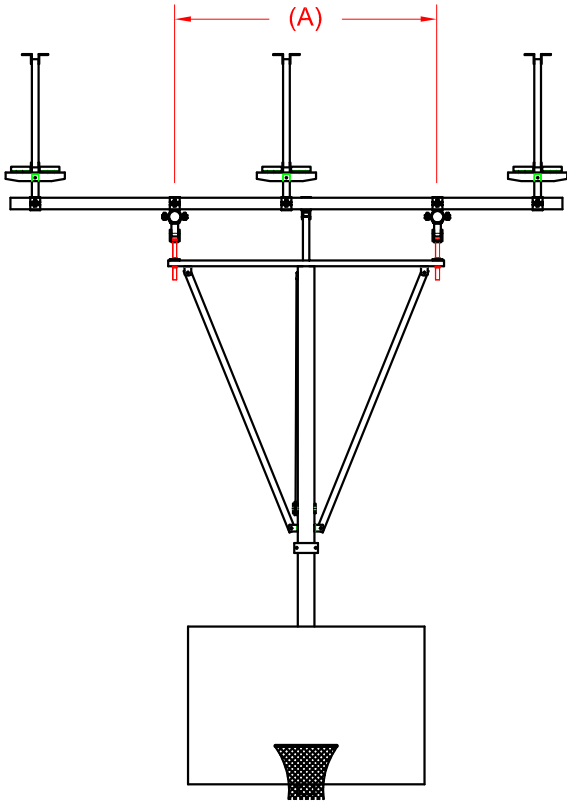
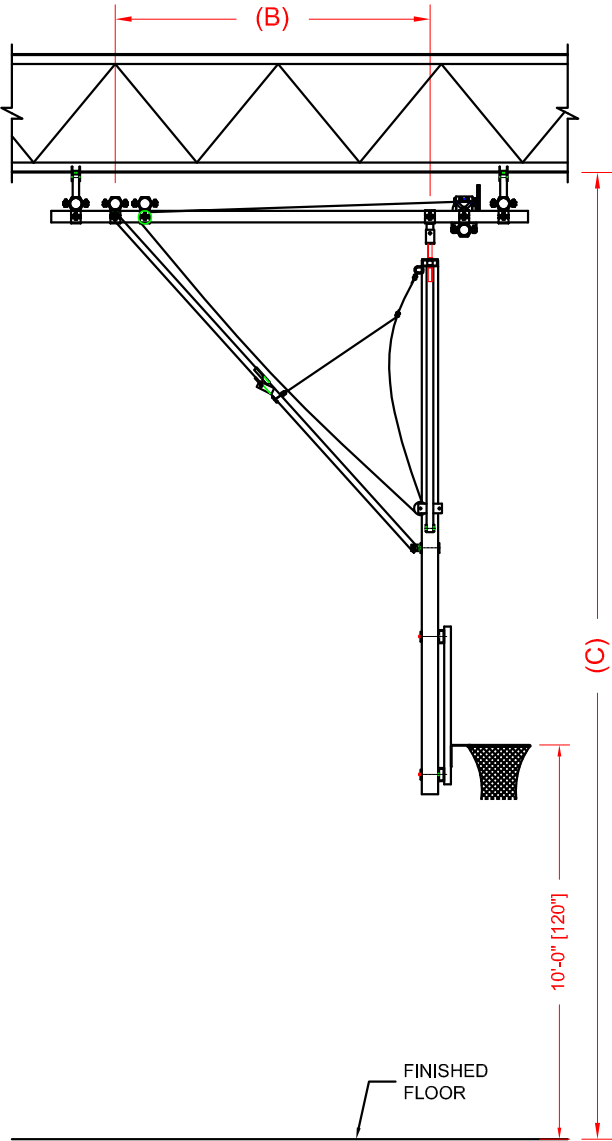
- MODEL -	- A -	- B -	- C -
RS-200-FB-180	18'-0" (216")	3'-9 1/2" (45 1/2")	3'-8" (44")
RS-200-FB-186	18'-6" (222")	4'-3 1/2" (51 1/2")	
RS-200-FB-190	19'-0" (228")	4'-9 1/2" (57 1/2")	
RS-200-FB-196	19'-6" (234")	5'-3 1/2" (63 1/2")	
RS-200-FB-200	20'-0" (240")	5'-9 1/2" (69 1/2")	4'-8" (56")
RS-200-FB-206	20'-6" (246")	6'-3 1/2" (75 1/2")	
RS-200-FB-210	21'-0" (252")	6'-9 1/2" (81 1/2")	
RS-200-FB-216	21'-6" (258")	7'-3 1/2" (87 1/2")	
RS-200-FB-220	22'-0" (264")	7'-9 1/2" (93 1/2")	5'-8" (68")
RS-200-FB-226	22'-6" (270")	8'-3 1/2" (99 1/2")	
RS-200-FB-230	23'-0" (276")	8'-9 1/2" (105 1/2")	
RS-200-FB-236	23'-6" (282")	9'-3 1/2" (111 1/2")	
RS-200-FB-240	24'-0" (288")	9'-9 1/2" (117 1/2")	6'-8" (80")
RS-200-FB-246	24'-6" (294")	10'-3 1/2" (123 1/2")	
RS-200-FB-250	25'-0" (300")	10'-9 1/2" (129 1/2")	
RS-200-FB-256	25'-6" (306")	11'-3 1/2" (135 1/2")	
RS-200-FB-260	26'-0" (312")	11'-9 1/2" (141 1/2")	
RS-200-FB-266	26'-6" (318")	12'-3 1/2" (147 1/2")	
RS-200-FB-270	27'-0" (324")	12'-9 1/2" (153 1/2")	
RS-200-FB-276	27'-6" (330")	13'-3 1/2" (159 1/2")	
RS-200-FB-280	28'-0" (336")	13'-9 1/2" (165 1/2")	



A	05/05/15	DRAWING RELEASE	SC	
REV	DATE	REVISIONS DESCRIPTION	BY	CHK'D
DO NOT SCALE DWG, UOS DIMENSIONS ARE IMPERIAL INCHES				

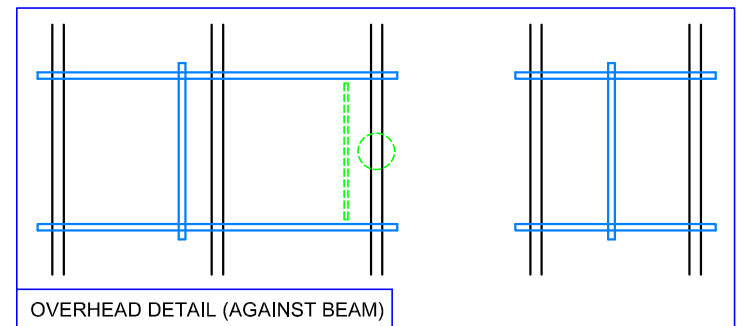
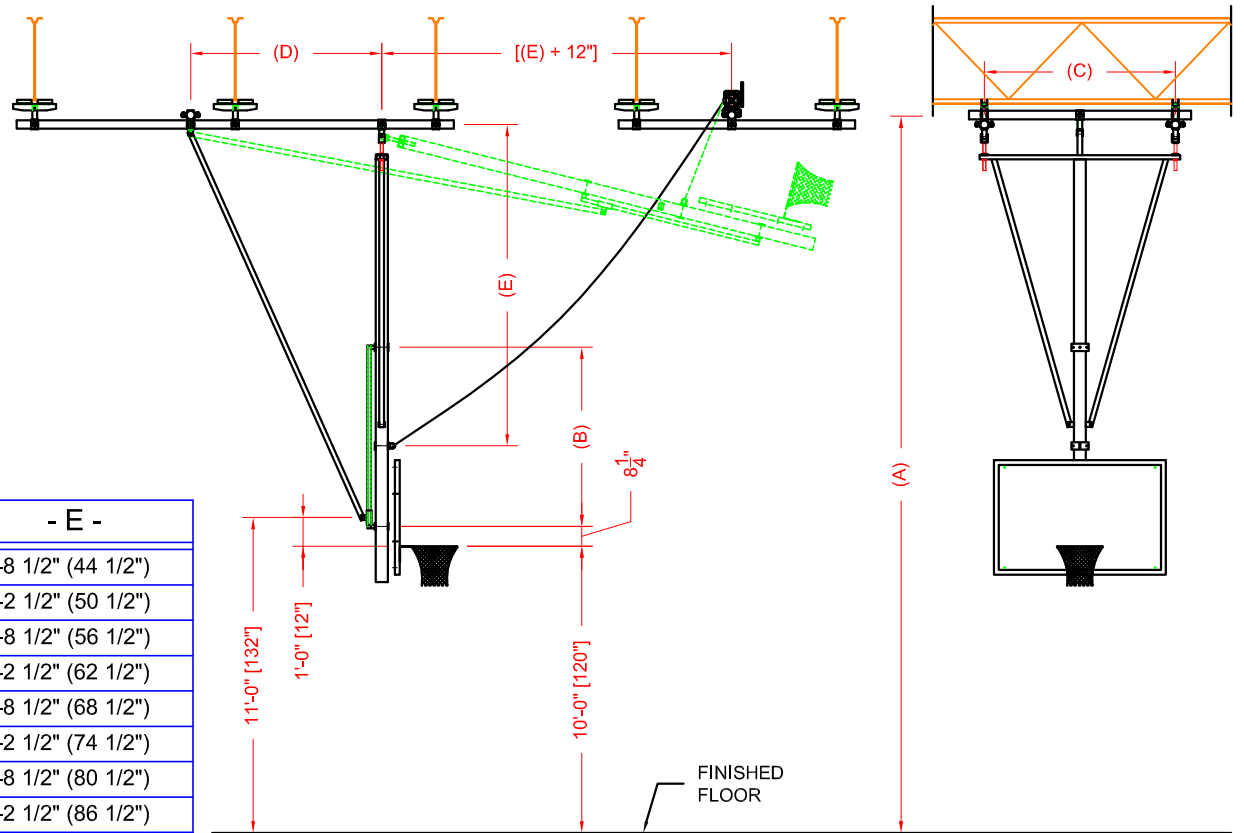
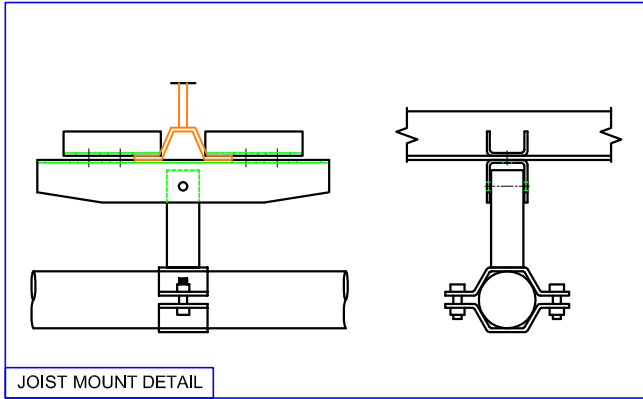
WORK ORDER / TRACKING NO		QTY REQUIRED		<div>ROYAL STEWART LTD.</div> <div>Your Sports Facility and Auditorium Specialists</div> <div>240 I-XL Cres. (St. Clements Ind. Park)</div> <div>Lockport, Manitoba, Canada, R1A 3R9</div>		1	
MATERIAL						1	
TITLE		RS-200-RB-XXX SINGLE MAST BACKSTOP (DIRECTION : AGAINST BEAM)		SCALE	N.T.S.	DWG SHEET NO	ROUTING
				DRAWN BY	ET	1	
				DATE	04/23/04	DWG NO	REV
							A

- MODEL -	- A -	- B -	- C -
RS-200-FB-180	18'-0" (216")	3'-5 1/2" (41 1/2")	3'-8" (44")
RS-200-FB-186	18'-6" (222")	3'-11 1/2" (47 1/2")	
RS-200-FB-190	19'-0" (228")	4'-5 1/2" (53 1/2")	4'-8" (56")
RS-200-FB-196	19'-6" (234")	4'-11 1/2" (59 1/2")	
RS-200-FB-200	20'-0" (240")	5'-5 1/2" (65 1/2")	
RS-200-FB-206	20'-6" (246")	5'-11 1/2" (71 1/2")	
RS-200-FB-210	21'-0" (252")	6'-5 1/2" (77 1/2")	
RS-200-FB-216	21'-6" (258")	6'-11 1/2" (83 1/2")	
RS-200-FB-220	22'-0" (264")	7'-5 1/2" (89 1/2")	5'-8" (68")
RS-200-FB-226	22'-6" (270")	7'-11 1/2" (95 1/2")	
RS-200-FB-230	23'-0" (276")	8'-5 1/2" (101 1/2")	
RS-200-FB-236	23'-6" (282")	8'-11 1/2" (107 1/2")	
RS-200-FB-240	24'-0" (288")	9'-5 1/2" (113 1/2")	
RS-200-FB-246	24'-6" (294")	9'-11 1/2" (119 1/2")	
RS-200-FB-250	25'-0" (300")	10'-5 1/2" (125 1/2")	6'-8" (80")
RS-200-FB-256	25'-6" (306")	10'-11 1/2" (131 1/2")	
RS-200-FB-260	26'-0" (312")	11'-5 1/2" (137 1/2")	
RS-200-FB-266	26'-6" (318")	11'-11 1/2" (143 1/2")	
RS-200-FB-270	27'-0" (324")	12'-5 1/2" (149 1/2")	
RS-200-FB-276	27'-6" (330")	12'-11 1/2" (155 1/2")	
RS-200-FB-280	28'-0" (336")	13'-5 1/2" (161 1/2")	



A	05/05/15	DRAWING RELEASE	SC	
REV	DATE	REVISIONS DESCRIPTION	BY	CHK'D
DO NOT SCALE DWG, UOS DIMENSIONS ARE IMPERIAL INCHES				

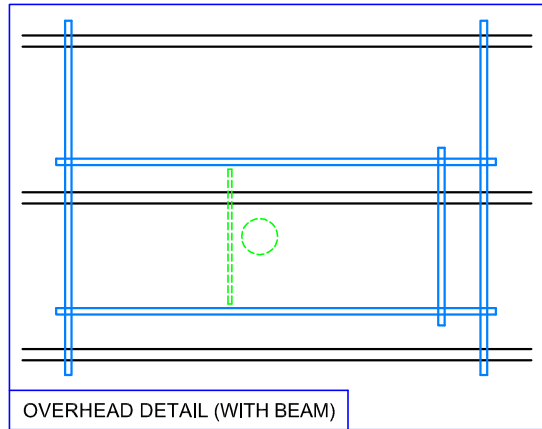
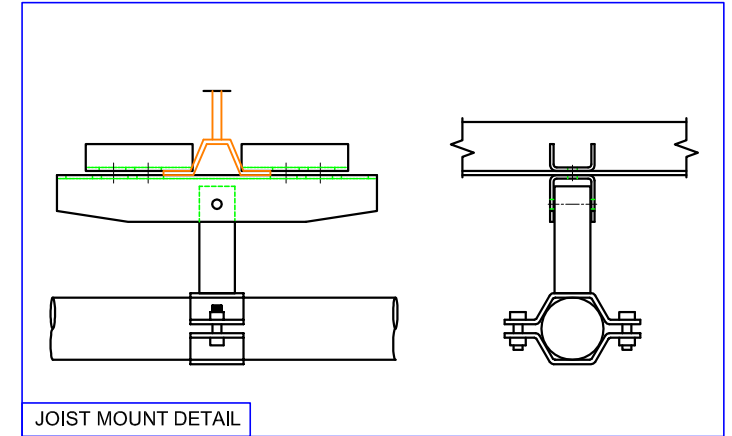
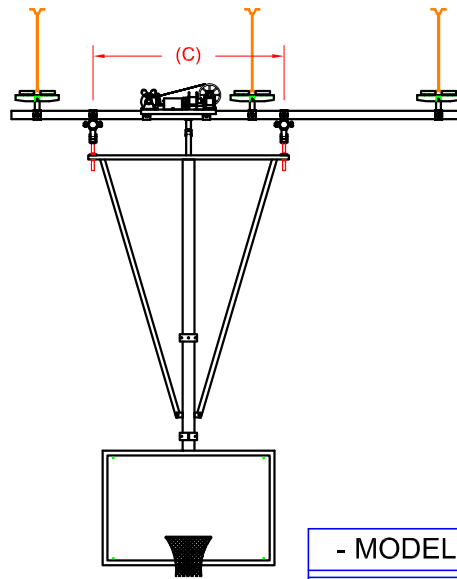
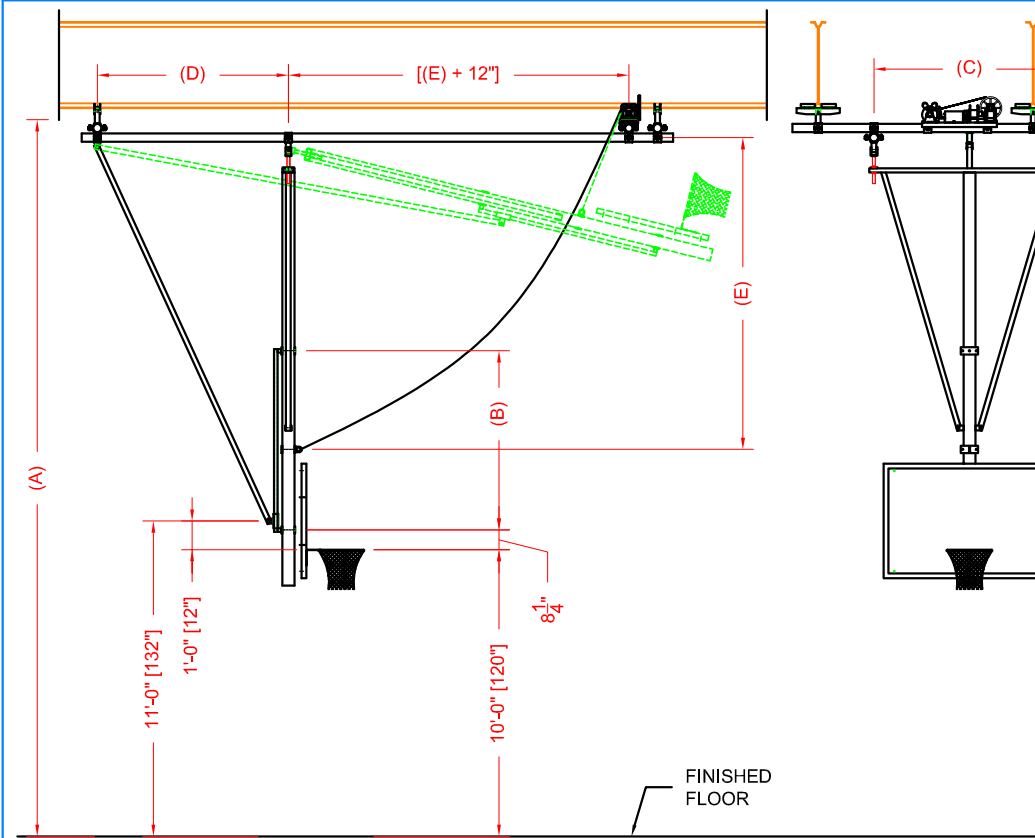
WORK ORDER / TRACKING NO		QTY REQUIRED		<div>ROYAL STEWART LTD.</div> <div>Your Sports Facility and Auditorium Specialists</div> <div>240 I-XL Cres. (St. Clements Ind. Park)</div> <div>Lockport, Manitoba, Canada, R1A 3R9</div>		1	
MATERIAL						1	
TITLE		RS-200-RB-XXX SINGLE MAST BACKSTOP (DIRECTION : WITH BEAM)		SCALE N.T.S. DRAWN BY ET DATE 04/23/04		<div>DWG SHEET NO</div> <div>1</div> <div>DWG NO</div>	<div>ROUTING</div> <div>REV</div> <div>A</div>



- MODEL -	- A -	- B -	- C -	- D -	- E -
RS-200-RB-176	17'-6" (210")	5'-1" (61")	3'-8" (44")	5'-0" (60")	3'-8 1/2" (44 1/2")
RS-200-RB-180	18'-0" (216")	6'-1" (73")	4'-8" (56")		4'-2 1/2" (50 1/2")
RS-200-RB-186	18'-6" (222")				4'-8 1/2" (56 1/2")
RS-200-RB-190	19'-0" (228")				5'-2 1/2" (62 1/2")
RS-200-RB-196	19'-6" (234")				5'-8 1/2" (68 1/2")
RS-200-RB-200	20'-0" (240")			6'-2 1/2" (74 1/2")	
RS-200-RB-206	20'-6" (246")		6'-8 1/2" (80 1/2")		
RS-200-RB-210	21'-0" (252")		7'-2 1/2" (86 1/2")		
RS-200-RB-216	21'-6" (258")		7'-8 1/2" (92 1/2")		
RS-200-RB-220	22'-0" (264")		5'-8" (68")	5'-8" (68")	8'-2 1/2" (98 1/2")
RS-200-RB-226	22'-6" (270")				8'-8 1/2" (104 1/2")
RS-200-RB-230	23'-0" (276")	9'-2 1/2" (110 1/2")			
RS-200-RB-236	23'-6" (282")	9'-8 1/2" (116 1/2")			
RS-200-RB-240	24'-0" (288")	10'-2 1/2" (122 1/2")			
RS-200-RB-246	24'-6" (294")	6'-3" (75")	6'-8" (80")	6'-8" (80")	10'-8 1/2" (128 1/2")
RS-200-RB-250	25'-0" (300")				11'-2 1/2" (134 1/2")
RS-200-RB-256	25'-6" (306")				11'-8 1/2" (140 1/2")
RS-200-RB-260	26'-0" (312")				12'-2 1/2" (146 1/2")
RS-200-RB-266	26'-6" (318")				12'-8 1/2" (152 1/2")
RS-200-RB-270	27'-0" (324")	6'-9" (81")	7'-8" (92")	7'-8" (92")	13'-2 1/2" (158 1/2")
RS-200-RB-276	27'-6" (330")				13'-8 1/2" (164 1/2")
RS-200-RB-280	28'-0" (336")				14'-2 1/2" (170 1/2")

WORK ORDER / TRACKING NO		QTY REQUIRED		<div>ROYAL STEWART LTD.</div> <div>Your Sports Facility and Auditorium Specialists</div> <div>240 I-XL Cres. (St. Clements Ind. Park)</div> <div>Lockport, Manitoba, Canada, R1A 3R9</div>			1	
MATERIAL							1	
TITLE RS-200-RSB-XXX SINGLE MAST BACKSTOP (DIRECTION : AGAINST BEAM)				SCALE N.T.S.		DWG SHEET NO		ROUTING
				DRAWN BY ET		1		
				DATE 04/26/04		DWG NO		REV A

A	05/05/15	DRAWING RELEASE	SC	
REV	DATE	REVISIONS DESCRIPTION	BY	CHK'D
DO NOT SCALE DWG, UOS DIMENSIONS ARE IMPERIAL INCHES				

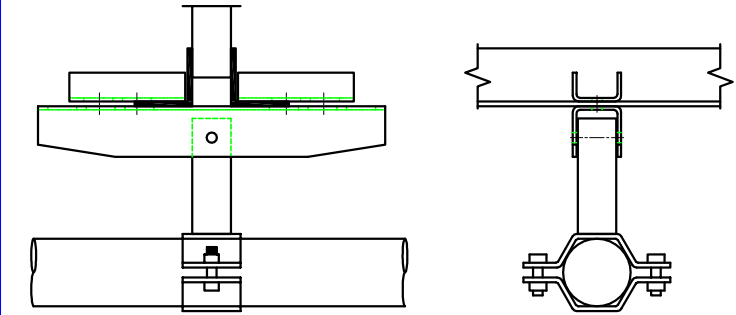
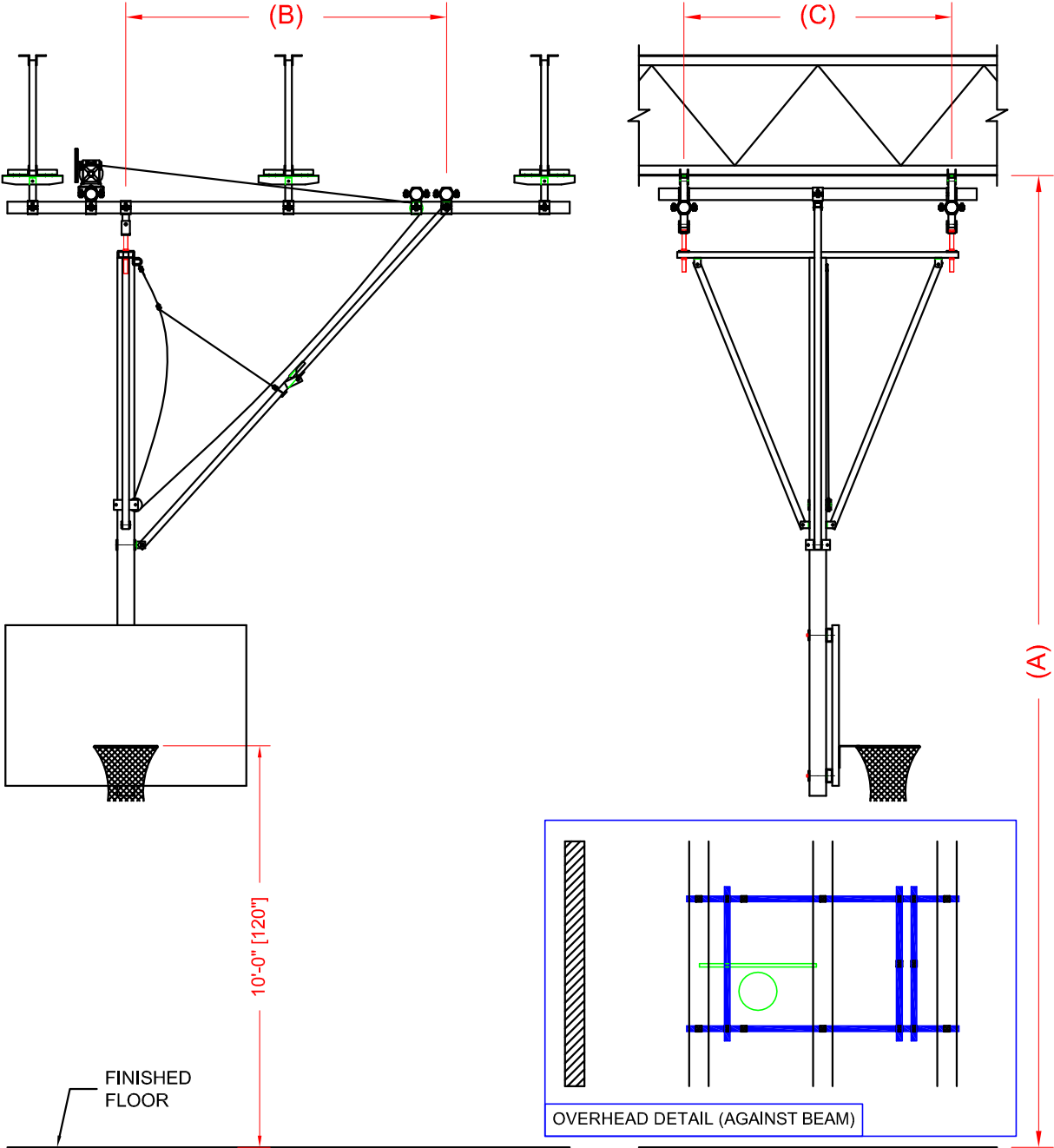


- MODEL -	- A -	- B -	- C -	- D -	- E -
RS-200-RB-176	17'-6" (210")	5'-1" (61")	3'-8" (44")	5'-0" (60")	3'-4 1/2" (40 1/2")
RS-200-RB-180	18'-0" (216")	6'-1" (73")	4'-8" (56")		3'-10 1/2" (46 1/2")
RS-200-RB-186	18'-6" (222")				4'-4 1/2" (52 1/2")
RS-200-RB-190	19'-0" (228")				4'-10 1/2" (58 1/2")
RS-200-RB-196	19'-6" (234")				5'-4 1/2" (64 1/2")
RS-200-RB-200	20'-0" (240")				5'-10 1/2" (70 1/2")
RS-200-RB-206	20'-6" (246")				6'-4 1/2" (76 1/2")
RS-200-RB-210	21'-0" (252")				6'-10 1/2" (82 1/2")
RS-200-RB-216	21'-6" (258")				7'-4 1/2" (88 1/2")
RS-200-RB-220	22'-0" (264")				7'-10 1/2" (94 1/2")
RS-200-RB-226	22'-6" (270")			5'-8" (68")	5'-8" (68")
RS-200-RB-230	23'-0" (276")	8'-10 1/2" (106 1/2")			
RS-200-RB-236	23'-6" (282")	9'-4 1/2" (112 1/2")			
RS-200-RB-240	24'-0" (288")	9'-10 1/2" (118 1/2")			
RS-200-RB-246	24'-6" (294")	10'-4 1/2" (124 1/2")			
RS-200-RB-250	25'-0" (300")	10'-10 1/2" (130 1/2")			
RS-200-RB-256	25'-6" (306")	6'-3" (75")	6'-8" (80")	6'-8" (80")	11'-4 1/2" (136 1/2")
RS-200-RB-260	26'-0" (312")	6'-9" (81")	6'-8" (80")	6'-8" (80")	11'-10 1/2" (142 1/2")
RS-200-RB-266	26'-6" (318")				12'-4 1/2" (148 1/2")
RS-200-RB-270	27'-0" (324")				12'-10 1/2" (154 1/2")
RS-200-RB-276	27'-6" (330")				13'-4 1/2" (160 1/2")
RS-200-RB-280	28'-0" (336")				13'-10 1/2" (166 1/2")

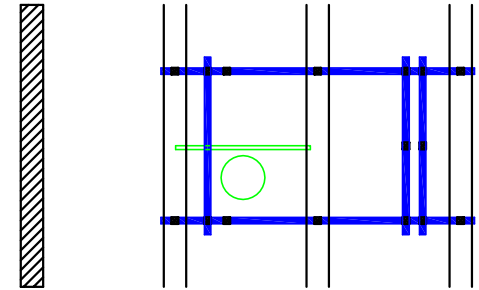
A	05/05/15	DRAWING RELEASE	SC	
REV	DATE	REVISIONS DESCRIPTION	BY	CHK'D
DO NOT SCALE DWG, UOS DIMENSIONS ARE IMPERIAL INCHES				

WORK ORDER / TRACKING NO	QTY REQUIRED	ROYAL STEWART LTD. Your Sports Facility and Auditorium Specialists 240 I-XL Cres. (St. Clements Ind. Park) Lockport, Manitoba, Canada, R1A 3R9		1
MATERIAL				1
TITLE	RS-200-RSB-XXX SINGLE MAST BACKSTOP (DIRECTION : WITH BEAM)		SCALE	N.T.S.
			DRAWN BY	ET
			DATE	04/27/04
			DWG SHEET NO	1
			DWG NO	
			ROUTING	REV A

- MODEL -	- A -	- B -	- C -
RS-200-FB-180	18'-0" (216")	3'-9 1/2" (45 1/2")	3'-8" (44")
RS-200-FB-186	18'-6" (222")	4'-3 1/2" (51 1/2")	
RS-200-FB-190	19'-0" (228")	4'-9 1/2" (57 1/2")	
RS-200-FB-196	19'-6" (234")	5'-3 1/2" (63 1/2")	
RS-200-FB-200	20'-0" (240")	5'-9 1/2" (69 1/2")	4'-8" (56")
RS-200-FB-206	20'-6" (246")	6'-3 1/2" (75 1/2")	
RS-200-FB-210	21'-0" (252")	6'-9 1/2" (81 1/2")	
RS-200-FB-216	21'-6" (258")	7'-3 1/2" (87 1/2")	
RS-200-FB-220	22'-0" (264")	7'-9 1/2" (93 1/2")	5'-8" (68")
RS-200-FB-226	22'-6" (270")	8'-3 1/2" (99 1/2")	
RS-200-FB-230	23'-0" (276")	8'-9 1/2" (105 1/2")	
RS-200-FB-236	23'-6" (282")	9'-3 1/2" (111 1/2")	
RS-200-FB-240	24'-0" (288")	9'-9 1/2" (117 1/2")	6'-8" (80")
RS-200-FB-246	24'-6" (294")	10'-3 1/2" (123 1/2")	
RS-200-FB-250	25'-0" (300")	10'-9 1/2" (129 1/2")	
RS-200-FB-256	25'-6" (306")	11'-3 1/2" (135 1/2")	
RS-200-FB-260	26'-0" (312")	11'-9 1/2" (141 1/2")	
RS-200-FB-266	26'-6" (318")	12'-3 1/2" (147 1/2")	
RS-200-FB-270	27'-0" (324")	12'-9 1/2" (153 1/2")	
RS-200-FB-276	27'-6" (330")	13'-3 1/2" (159 1/2")	
RS-200-FB-280	28'-0" (336")	13'-9 1/2" (165 1/2")	



JOIST MOUNT DETAIL



OVERHEAD DETAIL (AGAINST BEAM)

WORK ORDER / TRACKING NO

QTY REQUIRED

MATERIAL

TITLE RS-200-SB-XXX
SINGLE MAST BACKSTOP
(DIRECTION : AGAINST BEAM)

ROYAL STEWART LTD.

Your Sports Facility and Auditorium Specialists
240 I-XL Cres. (St. Clements Ind. Park)
Lockport, Manitoba, Canada, R1A 3R9

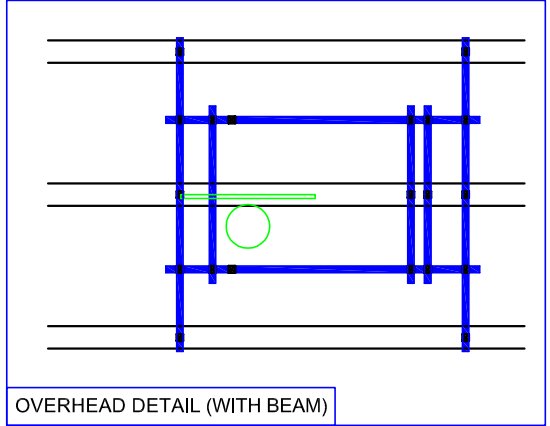
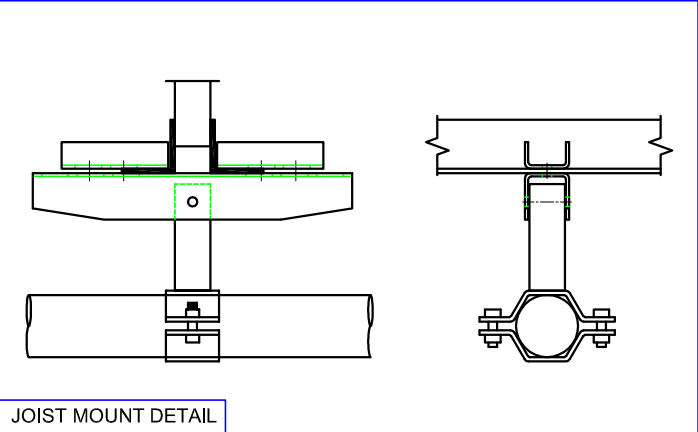
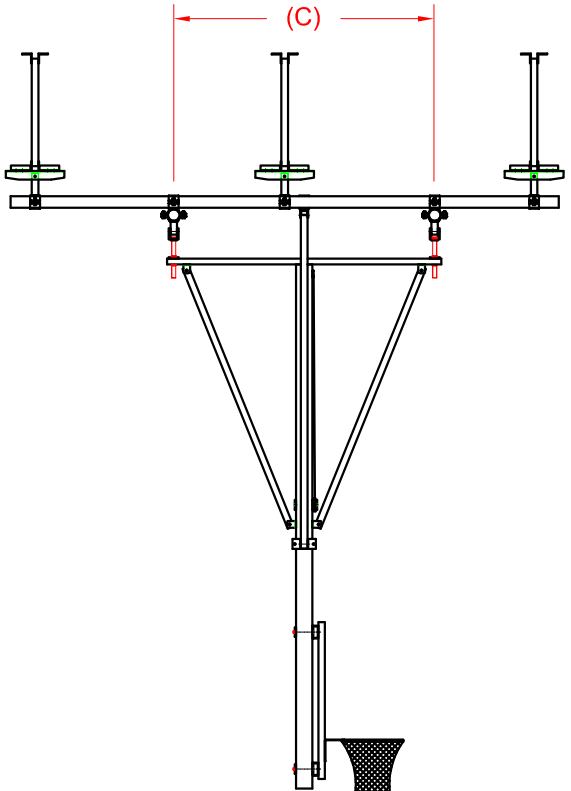
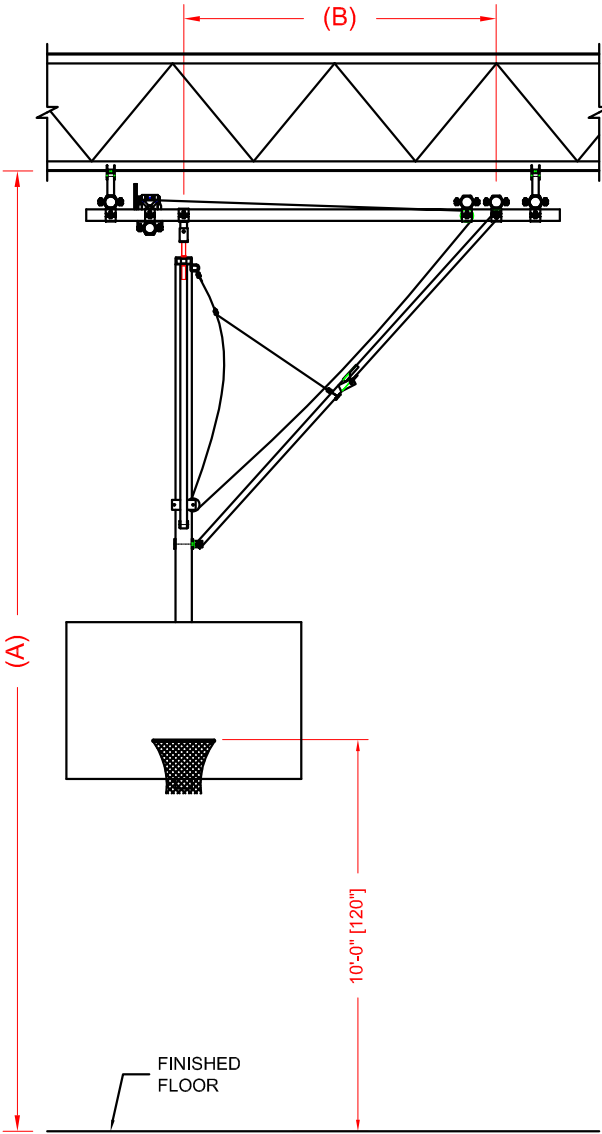
SCALE N.T.S.
DRAWN BY ET
DATE 04/23/04

DWG SHEET NO 1
DWG NO

1
1
ROUTING
REV
A

A	05/05/15	DRAWING RELEASE	SC	
REV	DATE	REVISIONS DESCRIPTION	BY	CHK'D
DO NOT SCALE DWG, UOS DIMENSIONS ARE IMPERIAL INCHES				

- MODEL -	- A -	- B -	- C -
RS-200-FB-180	18'-0" (216")	3'-5 1/2" (41 1/2")	3'-8" (44")
RS-200-FB-186	18'-6" (222")	3'-11 1/2" (47 1/2")	
RS-200-FB-190	19'-0" (228")	4'-5 1/2" (53 1/2")	4'-8" (56")
RS-200-FB-196	19'-6" (234")	4'-11 1/2" (59 1/2")	
RS-200-FB-200	20'-0" (240")	5'-5 1/2" (65 1/2")	
RS-200-FB-206	20'-6" (246")	5'-11 1/2" (71 1/2")	
RS-200-FB-210	21'-0" (252")	6'-5 1/2" (77 1/2")	
RS-200-FB-216	21'-6" (258")	6'-11 1/2" (83 1/2")	
RS-200-FB-220	22'-0" (264")	7'-5 1/2" (89 1/2")	5'-8" (68")
RS-200-FB-226	22'-6" (270")	7'-11 1/2" (95 1/2")	
RS-200-FB-230	23'-0" (276")	8'-5 1/2" (101 1/2")	
RS-200-FB-236	23'-6" (282")	8'-11 1/2" (107 1/2")	
RS-200-FB-240	24'-0" (288")	9'-5 1/2" (113 1/2")	
RS-200-FB-246	24'-6" (294")	9'-11 1/2" (119 1/2")	
RS-200-FB-250	25'-0" (300")	10'-5 1/2" (125 1/2")	6'-8" (80")
RS-200-FB-256	25'-6" (306")	10'-11 1/2" (131 1/2")	
RS-200-FB-260	26'-0" (312")	11'-5 1/2" (137 1/2")	
RS-200-FB-266	26'-6" (318")	11'-11 1/2" (143 1/2")	
RS-200-FB-270	27'-0" (324")	12'-5 1/2" (149 1/2")	
RS-200-FB-276	27'-6" (330")	12'-11 1/2" (155 1/2")	
RS-200-FB-280	28'-0" (336")	13'-5 1/2" (161 1/2")	



A	05/05/15	DRAWING RELEASE	SC	
REV	DATE	REVISIONS DESCRIPTION	BY	CHK'D
DO NOT SCALE DWG, UOS DIMENSIONS ARE IMPERIAL INCHES				

WORK ORDER / TRACKING NO		QTY REQUIRED		<div>ROYAL STEWART LTD.</div> <div>Your Sports Facility and Auditorium Specialists</div> <div>240 I-XL Cres. (St. Clements Ind. Park)</div> <div>Lockport, Manitoba, Canada, R1A 3R9</div>			1
MATERIAL							1
TITLE		RS-200-SB-XXX SINGLE MAST BACKSTOP (DIRECTION : WITH BEAM)		SCALE	N.T.S.	DWG SHEET NO 1	ROUTING
				DRAWN BY	ET	DWG NO	REV
				DATE	04/23/04		A